

MARIA LUISA BOMBAL'S
VISION AND SOLUTION FOR
THE MASCULINE AND
FEMININE CONFLICT IN HER
NOVEL

Serafin Moreno

Capstone Project

Advisors: Dr. Donaldo Urioste and Dra. María Zielina

MARÍA LUISA BOMBAL (1910 – 1980)

❖ Biography:

- ❖ She was born on June 8, 1910, Viña del Mar, Chile
- ❖ After the death of her father she moved to Paris, France
- ❖ She lived at the house of Pablo Neruda (1933)

Other notable works:

- ❖ *La última niebla/The House of Mist* (1935)
- ❖ *La amortajada/The Shrouded Woman* (1938)
- ❖ *El árbol/The Tree* (1939)
- ❖ *Islas nuevas/New Islands* (1939)
- ❖ *Mar, cielo y tierra/Sea, Sky and Earth* (1940)
- ❖ *La historia de María Griselda/The Story of María Griselda* (1946)
- ❖ *La maja y el ruiseñor/The Maiden and the Nightingale* (1960).

LA ÚLTIMA NIEBLA (1935)

- ❖ Tells the story of a newly married **unknown woman**

Characters:

- ❖ Daniel (Woman's husband)
- ❖ Felipe (Daniel's brother)
- ❖ Regina (Felipe's wife)
- ❖ Andres (The Gardener's son)



SUMMARY OF THE STORY

❖ Tells the story of a newly married woman, who finds herself in a difficult situation, in which she has no way to flee from her life of monotony. The unknown woman, is confronted with internal loneliness and a romantic frustration. As a result, she longs for a second romantic encounter with a mysterious man, and is left with the invading sentiment of what might have been. Throughout the story, the woman lets her feelings be known about her sister-in-law, Regina. The woman envies her with a passion, for enjoying a romantic partnership outside of her marriage. Her envy, causes her to imagine a man with whom she has a romantic outing, this outing causes her much happiness, but also much sorrow. Throughout the story we find that the mist becomes a reoccurring theme, which allows the woman to imagine out of the ordinary encounters with the mysterious man.

THE
FOG

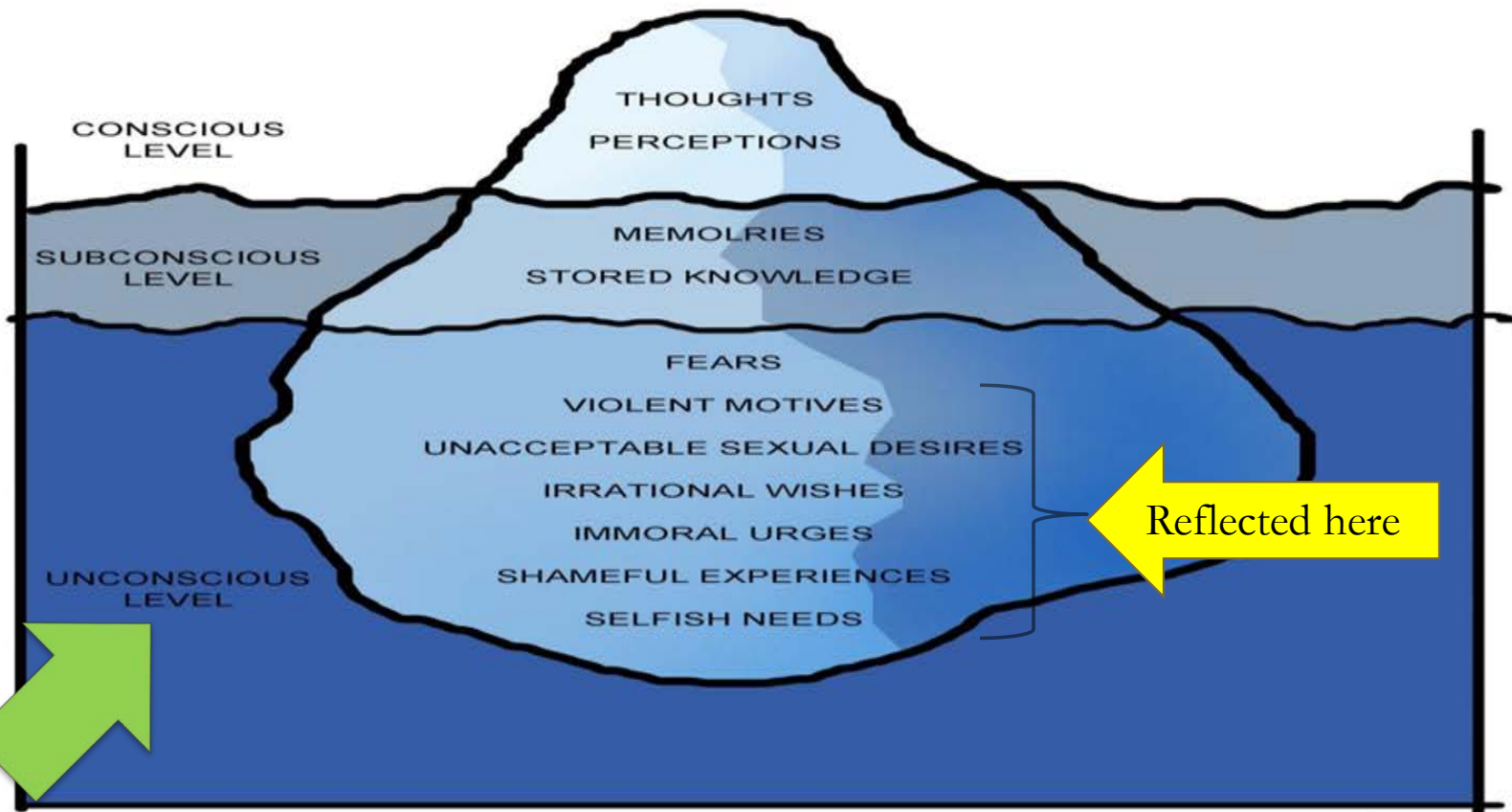
BLURRED SPACE

“La niebla se estrecha, cada día más, contra la casa. Ya hizo desaparecer las araucarias cuyas ramas golpeaban la balaustrada de la terraza. Anoche soñé que, por entre rendijas de las puertas y ventanas, se infiltraba lentamente en las casa...” (Bombal 16)

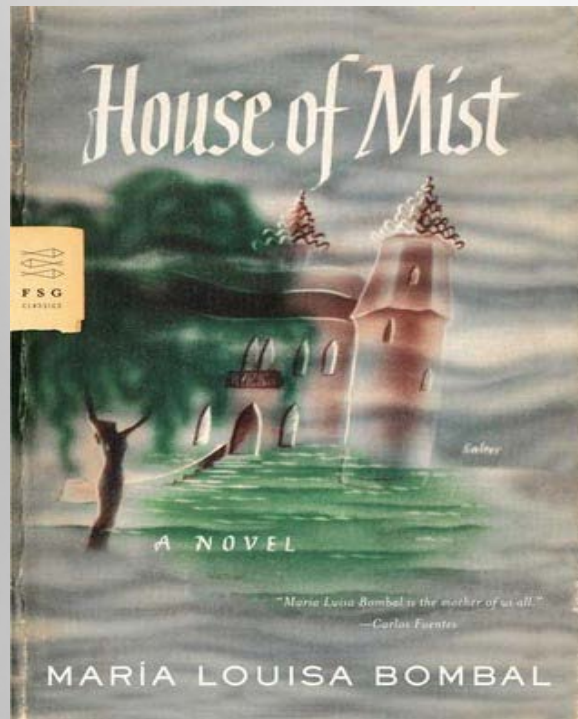


THE UNCONSCIOUS MIND

Freud's View of the Human Mind:
The Mental Iceberg



INFLUENTIAL MOVEMENTS



- ❖ Surrealism
- ❖ Vanguardism
- ❖ Dadaism

SURREALISM

- ❖ “The principles, ideals, or practice of producing **fantastic or incongruous imagery** or effects in art, literature, film, or theater by **means of unnatural or irrational juxtapositions and combinations**”
(Merriam-Webster)
- ❖ “Tambaleando penosamente, los caballos se abrían paso entre los árboles y la hojarasca sin provocar el menor ruido.” (Bombal 25)



VANGUARD

Female EMPOWERMENT

❖ Latin American Society:

- *La última niebla*, becomes the focus for Social Realism
(Writers deal with real social issues through their stories)



DADAISM

Creation of the PERFECT MAN:

❖ “Un hombre esta frente a mi, muy cerca de mi. Es joven; unos ojos muy claros en un rostro moreno y una de sus cejas levemente arqueada, prestan a su cara un aspecto casi sobrenatural. De el se desprende un vago pero envolvente calor” (Bombal 18).

SOCIAL NORMS

- ❖ Tarring down of social norms found in Chile during the 1930's.
- ❖ Stories deals with topics seen as **Taboo in the society**:
 - Female infidelity
 - Adultery
- ❖ “Anudo mis brazos tras la nuca, trenzo y destrenzo las piernas y cada gesto me atrae consigo un placer intenso y completo, como si, por fin, tuvieran una razón de ser mis brazos y mi cuello y mis piernas. ¡Aunque este goce fuera la única finalidad del amor, me sentiría ya bien recompensada!” (Bombal 20)

FEMALE EXISTENCE

❖ “...la penetración de personajes femeninos cuyos anhelos interiores están en una situación conflictiva con los modelos asignados por una sociedad que les ha adjudicado el rol fundamental de madre y esposa.” (Guerra-Cunningham 22).

❖ [Breaks the Model for Woman, Wife and Daughter.](#)



EXISTENTIALIST THINKING

“El nuevo pensamiento existencialista rompe la seguridad de lo tangible y propone una nueva visión que dominará todo el siglo XX”

- **Woman's Erotica:** according to Freud, woman's sexual urges are controlled by their mind!



FEMININE IDENTITY

- ❖ Internal search for her identity
- ❖ Search for an identity within society
- ❖ Shows her sexual frustration, through her **rebellion** against a patriarchal establishment!
- ❖ “Casi sin tocarme, me desata los cabellos y empieza a quitarme los vestidos. Me someto a su deseo callada y con el corazón palpitante” (Bombal 20).





BIBLIOGRAPHY

Agosín, Marjorie. *Las desterradas del paraíso, protagonistas en la narrativa de María Luisa Bombal*. Montclair, N. J.: Senda Nueva de Ediciones, Inc., 1983. Print.

Bombal, María Luisa. *La última niebla, La amortajada*. Córcega, Barcelona: Editorial Seix Barral, S.A., 1988. Print.

Guerra-Cunningham, Lucía. Erotismo y marginalidad en la narrativa de María Luisa Bombal. *JSTOR: Letras Femeninas*. Vol. 8, No. 1 (1982), pp.9-20. Association Internacional de Literatura y Cultura Femenina Hispanica. 27 Feb. 2014. Web.

Surrealism. Merriam-Webster.com. Merriam-Webster, 2011. 23 April 2014 .Web.